

## The Personal Consumption Expenditures came in higher than expected at 4.16%, First Republic Bank in big trouble, and Wall Street closed higher.

April 28, 2023

by Francisco Rodríguez-Castro  
[frc@birlingcapital.com](mailto:frc@birlingcapital.com)

The U.S. and European stock markets ended the week with modest gains, as several key economic metrics reported today, along with Amazon, which issued a warning of slower growth in its cloud computing business.

Today's metric preferred by the Fed, the Personal Consumption Expenditures, came in higher than expected at 4.16%, compared to the forecast of 4.10%. In addition, the U.S. Index of Consumer Sentiment increased to 63.50. However, there was a decline in both Personal Spending MoM and Personal Income MoM.

As more than 50% of the companies have reported their 1Q23 earnings, just about 80% have delivered a positive surprise, higher than the historical data of 73%.

On banking news, the beleaguered First Republic Bank (FRC) which reported its 1Q23 revenues of \$1.2 billion, down 13.40%, and a net income of \$269 million, falling 32.90%, the bank saw deposits fall 35.5% to \$104.5 billion, has seen its stock fall from \$147.00 on 2/2/23 to \$17.5q2 on 4/24/23, fell during the week another 61.31% to close at \$3.50 on 4/28/23. Don't be surprised if the FDIC takes over the bank tonight; although there may still be other options, should it fail, it will be a sad ending for a storied bank.

### Key Economic Data:

- **U.S. PCE Price Index YoY:** fell to 4.16%, compared to 5.08% last month.
- **U.S. Core PCE Price Index YoY:** fell to 4.60%, compared to 4.69% last month.
- **U.S. Index of Consumer Sentiment:** rose to 63.50, up from 62.00 last month, increasing 2.42%.
- **U.S. Personal Spending MoM:** fell to 0.05%, compared to 0.06% last month.
- **U.S. Personal Income MoM:** fell to 0.30%, compared to 0.33% last month.
- **Chicago PMI:** rose to 43.80, up from 43.60 last month, increasing 0.46%.
- **Canada Real GDP MoM:** fell to 0.05%, compared to 0.64% last month.
- **Germany Consumer Price Index YoY:** fell to 7.20%, compared to 7.40% last month.
- **Germany Real GDP YoY:** fell to 0.90%, compared to 1.40% last quarter.
- **Germany Unemployment Rate:** is unchanged at 5.70%, compared to 5.70% last month.
- **Japan Unemployment Rate:** rose to 2.80%, compared to 2.60% last month.
- **Japan Housing Starts YoY:** fell to -3.19%, compared to -0.29% last month.

### Eurozone Summary:

- Stoxx 600 closed at 466.39, up 2.36 points or 0.51%.
- FTSE 100 closed at 7,870.57, up 38.99 points or 0.50%.
- Dax Index closed at 15,922.38, up 121.93 points or 0.77%.

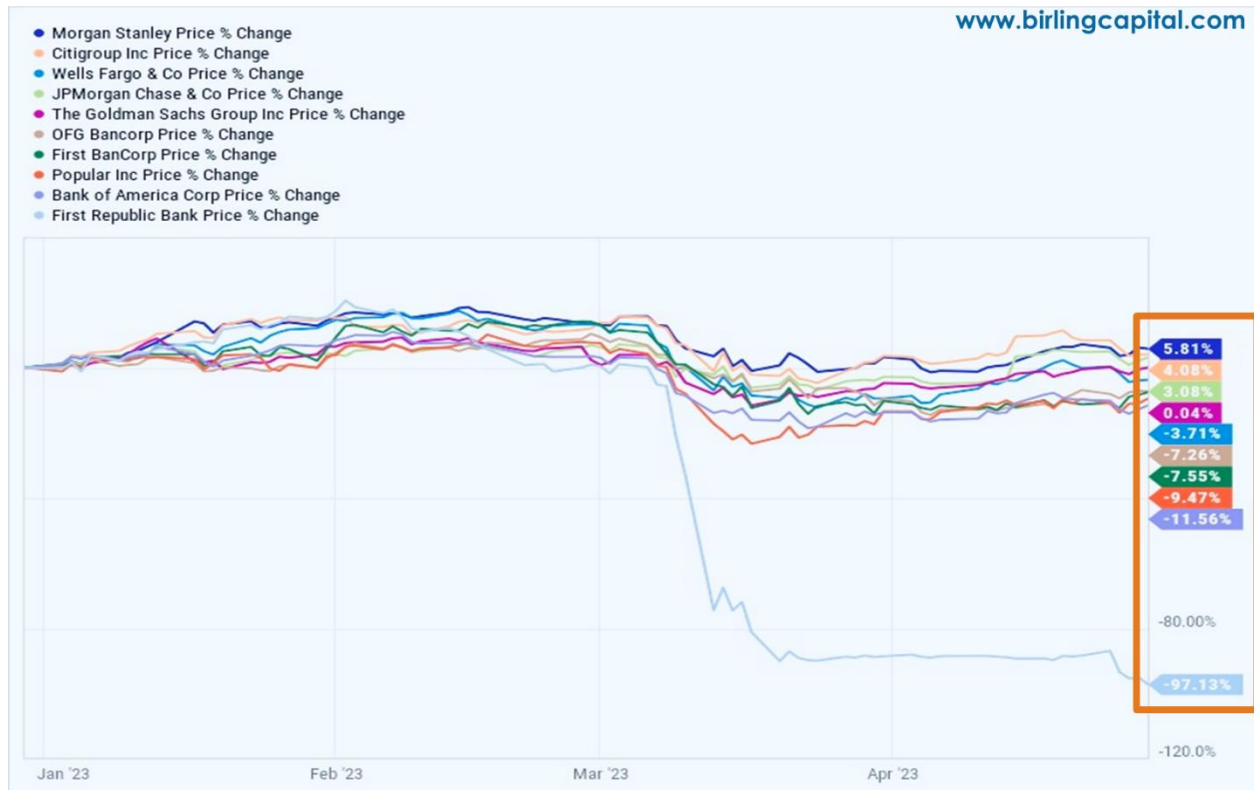
## Wall Street Summary:

- Dow Jones Industrial Average closed at 34,098.16, up 272.00 or 0.80%.
- S&P 500 closed at 4,169.48, up 34.13 points or 0.83%.
- Nasdaq Composite closed at 12,226.58, up 84.35 points or 0.69%.
- Birling Capital Puerto Rico Stock Index closed at 2,408.78, up 56.29 points or 2.39%.
- Birling Capital U.S. Bank Stock Index closed at 3,692.39, up 44.57 points or 1.22%.
- U.S. Treasury 10-year note closed at 3.44%.
- U.S. Treasury 2-year note closed at 4.04%.



## Returns of Top US & Puerto Rico Banks Versus First Republic Bank

www.birlingcapital.com

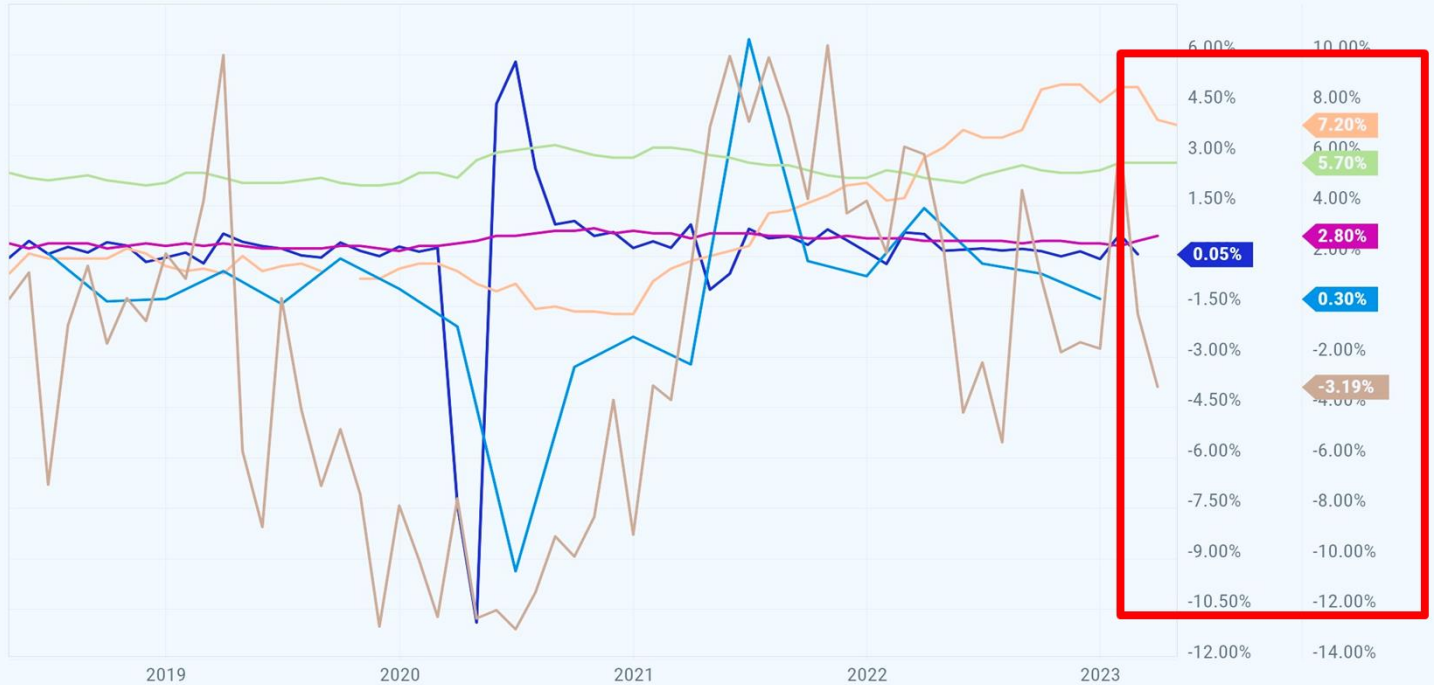




# Canada GDP, Germany CPI, Germany GDP, Germany Unemployment Rate, & Japan Unemployment Rate and Housing Starts

www.birlingcapital.com

- Canada Real GDP MoM (I:CRGDPSMP)
- Germany Consumer Price Index YoY (I:GCCPNGCS)
- Germany Real GDP YoY (I:GGDPGUQ)
- Germany Unemployment Rate (I:GURU8UFW)
- Japan Unemployment Rate (I:JURBS)
- Japan Housing Starts YoY (I:JCHS)





# US PCE, US Core PCE, US Personal Income, US Personal Spending & Chicago PMI

www.birlingcapital.com

- US Core PCE Price Index YoY
- US PCE Price Index YoY
- US Personal Income MoM
- US Personal Spending MoM
- Chicago PMI





Suscribase en: [www.birlingcapital.com](http://www.birlingcapital.com)

## Cierre de Wall Street

28 de abril de 2023



Global Market Square © es una publicación preparada por Birling Capital LLC y resume los recientes desarrollos geopolíticos, económicos, de mercado y otros que pueden ser de interés para los clientes de Birling Capital LLC. Este informe está destinado únicamente a fines de información general, no es un resumen completo de los asuntos a los que se hace referencia y no representa asesoramiento de inversión, legal, regulatorio o fiscal. Se advierte a los destinatarios de este informe que busquen un abogado profesional adecuado con respecto a cualquiera de los asuntos discutidos en este informe teniendo en cuenta la situación de los destinatarios. Birling Capital no se compromete a mantener a los destinatarios de este informe informados sobre la evolución futura o los cambios en cualquiera de los asuntos discutidos en este informe. Birling Capital. El símbolo de registro y Birling Capital se encuentran entre las marcas registradas de Birling Capital. Todos los derechos reservados.